



4 bedroom | 2.75 bath | 4,080 sf | MLS 2368267

5323 NE 42nd Street, Seattle

Mid-Century Modern in Laurelhurst

Perched at the end of a sun-drenched lane, this spectacular mid-century modern offers sweeping views of Lake Washington, Mt. Rainier and timeless architectural charm. Nestled in Laurelhurst, this 4-bedroom, 2 ¾-bath residence has been lovingly updated with thoughtful improvements, blending classic style with modern functionality. The spacious and light-filled main level features versatile living areas designed for entertaining, dining, working, and everyday comfort. Downstairs, the flexible lower level provides additional space to lounge, exercise, or host guests with ease. Expansive outdoor living for all—featuring two generous decks, inviting patios, an equipped outdoor kitchen, and a low-maintenance yard perfect for play or relaxation.

\$3,859,000

Home Gym

WFH Space

2-Large Outdoor Decks

Outdoor Kitchen

4,080 SF Living

6,032 SF Lot Size



Matthew Pelascini

(206) 227-5444

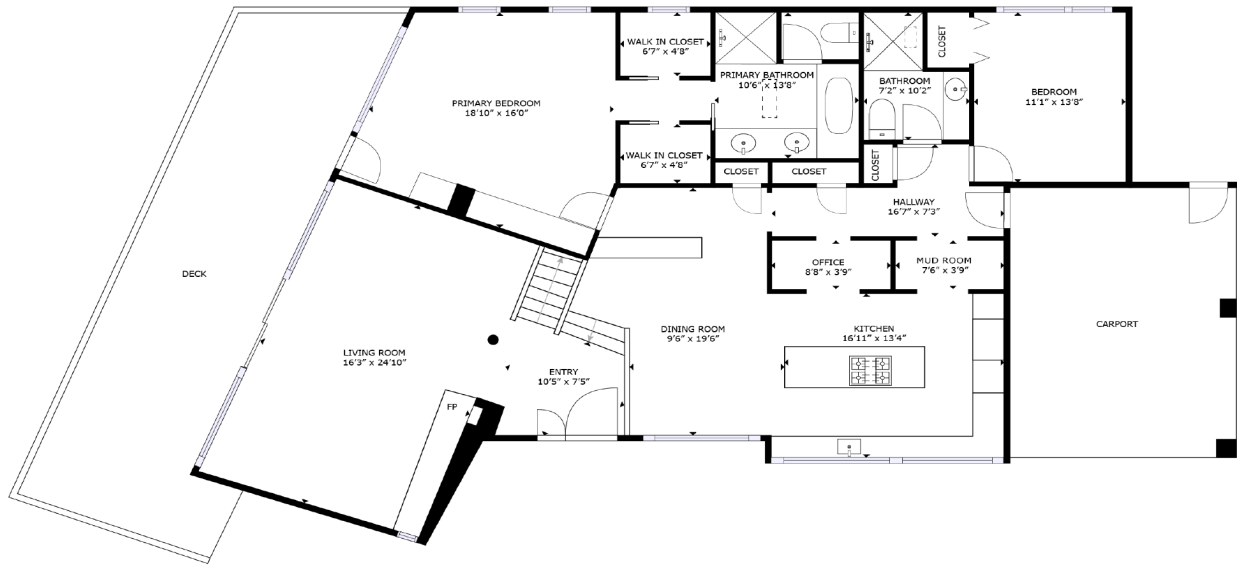
matt.pelascini@windermere.com

Windermere East Inc. | Bellevue West

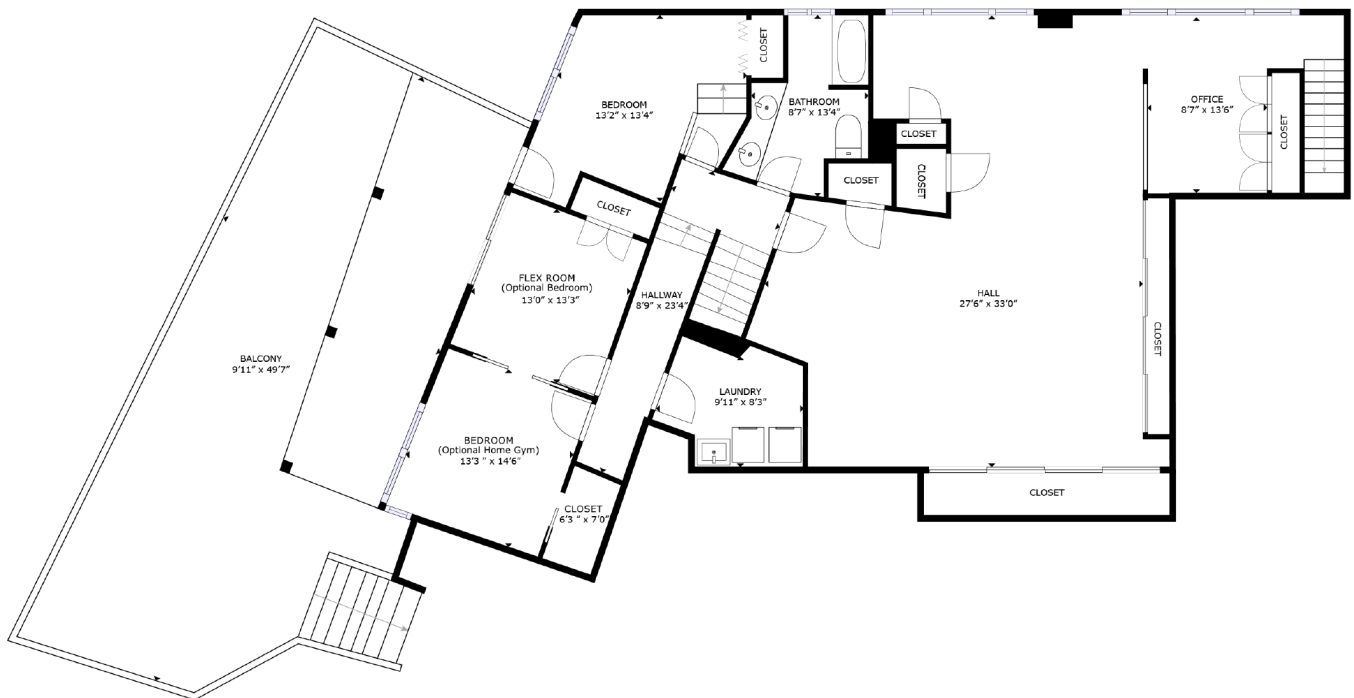
www.matthewpelascinihomes.com



Buyer to verify information to their own satisfaction.



MAIN LEVEL



Lower Level

Floor plans are for informational purposes only. Buyer to verify to their own satisfaction.